

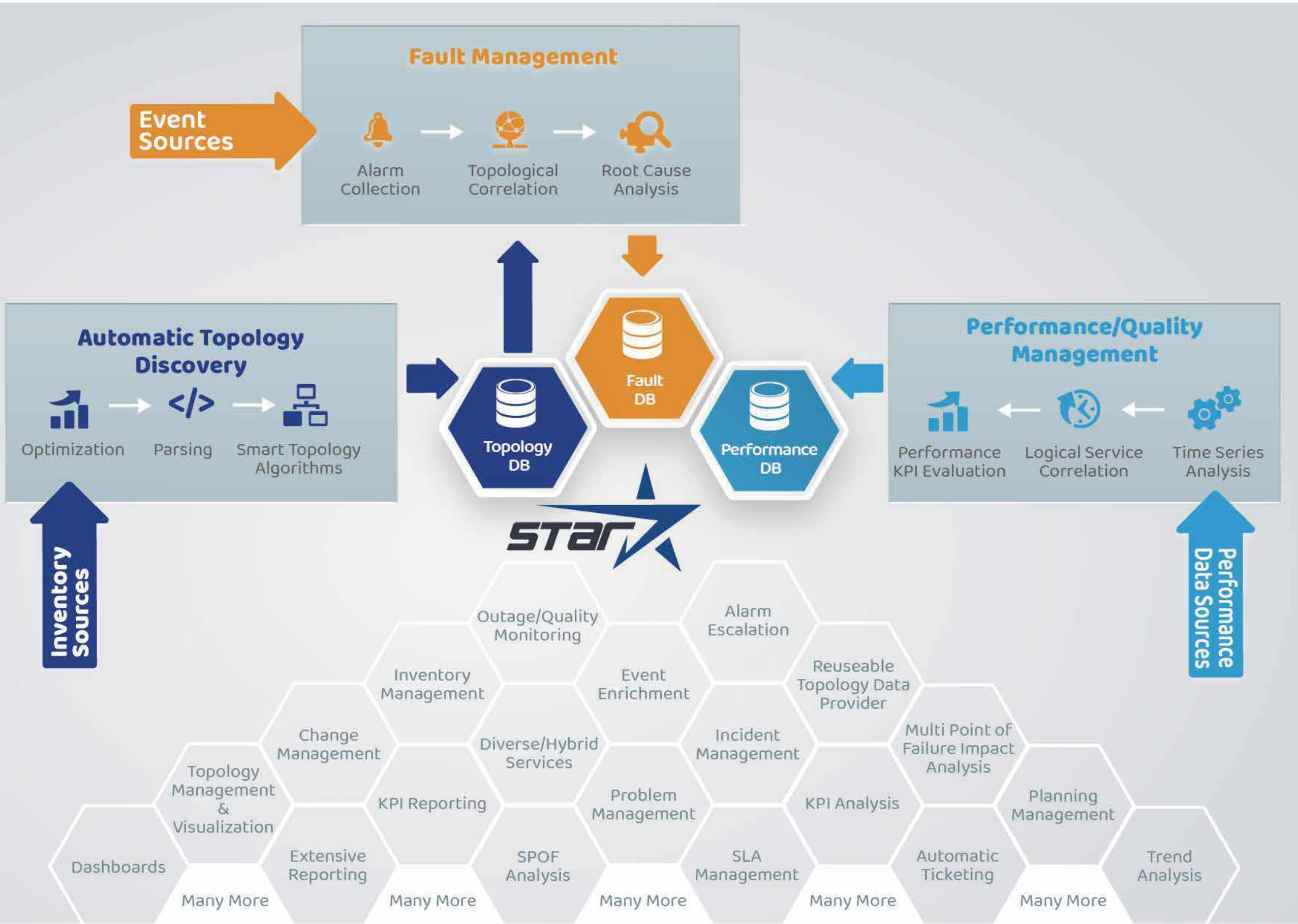


TELCO INFRASTRUCTURE OBSERVABILITY, QUALITY AND PERFORMANCE ASSESSMENT SUITE

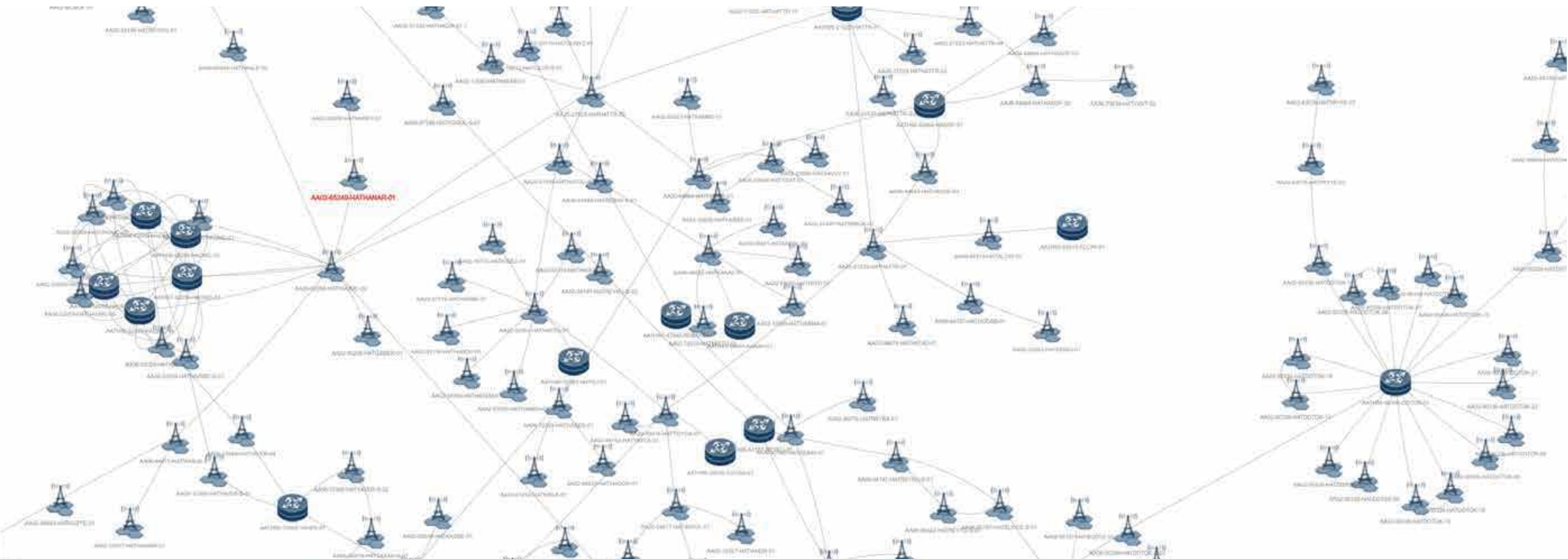


- ▶ Star Suite is the ultimate telco infrastructure observability, quality and performance assessment suite.
- ▶ Star Suite depends on integration provided by different vendors, with a technology and vendor agnostic way.
- ▶ 6 domains are currently available and new vendors can be added via adapters.
- ▶ With collected data, Star Suite determines topology, service outages, quality problems and many more.
- ▶ Vertical services can be built on Star Suite's data and tools.





- ▶ Star Suite provides automated topology discovery without any user input.
- ▶ Star enables **end-to-end** topology monitoring for each and every technology and vendor.
- ▶ Models are developed in detail to meet requirements for outage, quality and performance management.
- ▶ Topology of logical services such as WDM trails, radio links, MPLS tunnels and enriched data like customer, service type, region etc. are gathered and presented in a single screen.
- ▶ Resolved topology models can be visualized by Star Suite with technology and vendor correlation.
- ▶ Also current statuses of the physical and logical components can be shown on the graph view.



- [illegible]

Some of KPIs computed by Star Suite

► Outage SLA Reports

- Fiber/Link SLA Reports
- Service SLA Reports
- Customer SLA Reports
- Region SLA Reports
- Maintainer SLA Reports

► Fiber Attenuation

► Fiber/Link MTBF & MTTR

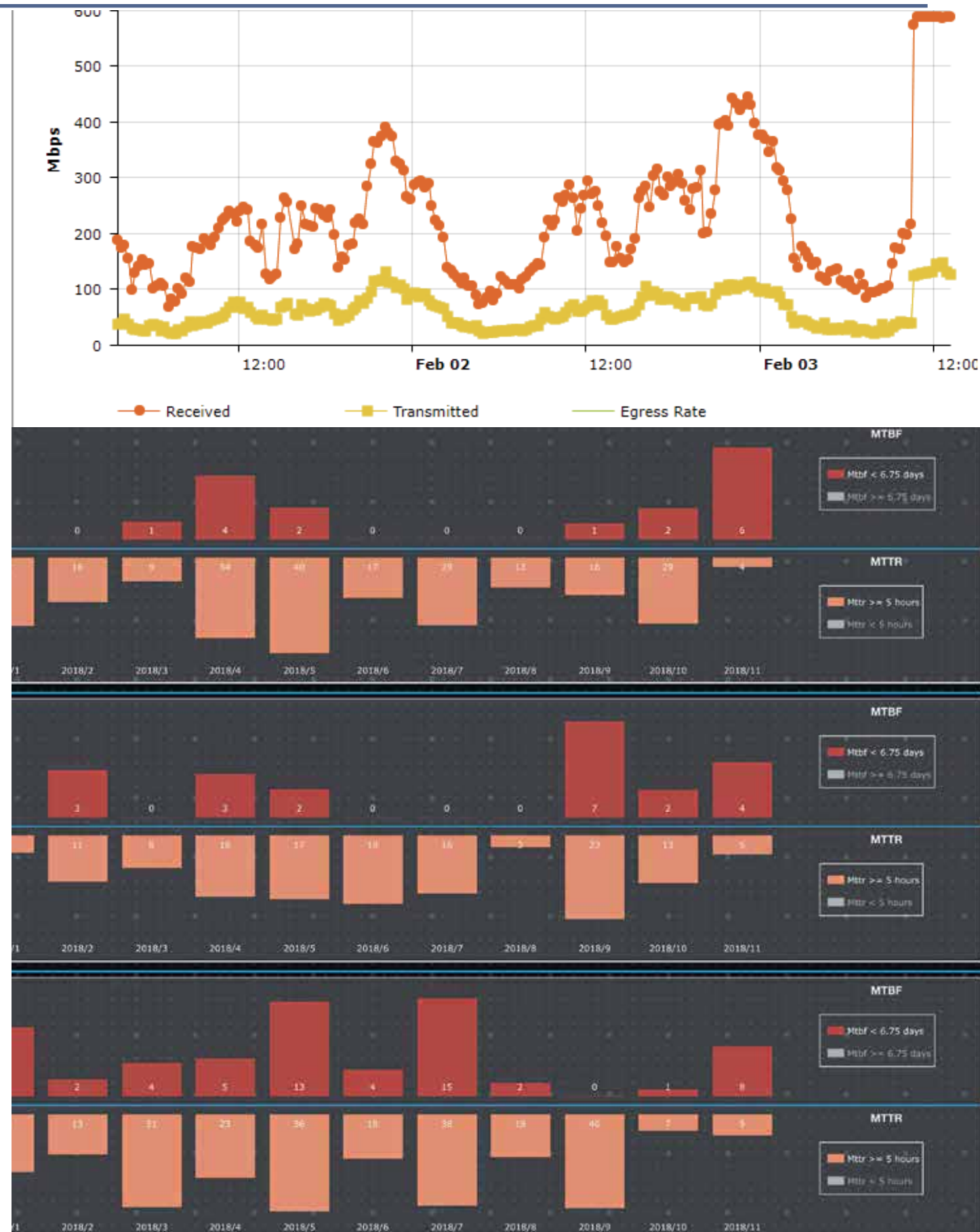
► Fiber/Link Flap Reports

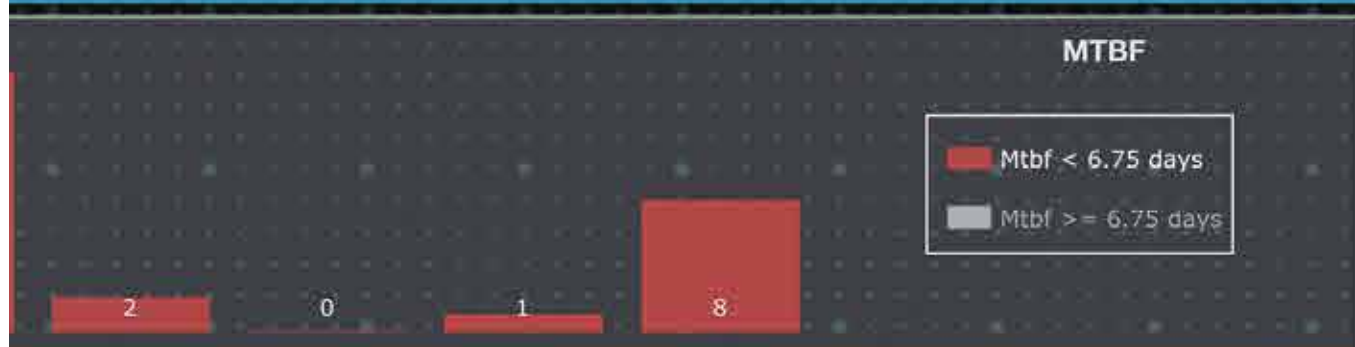
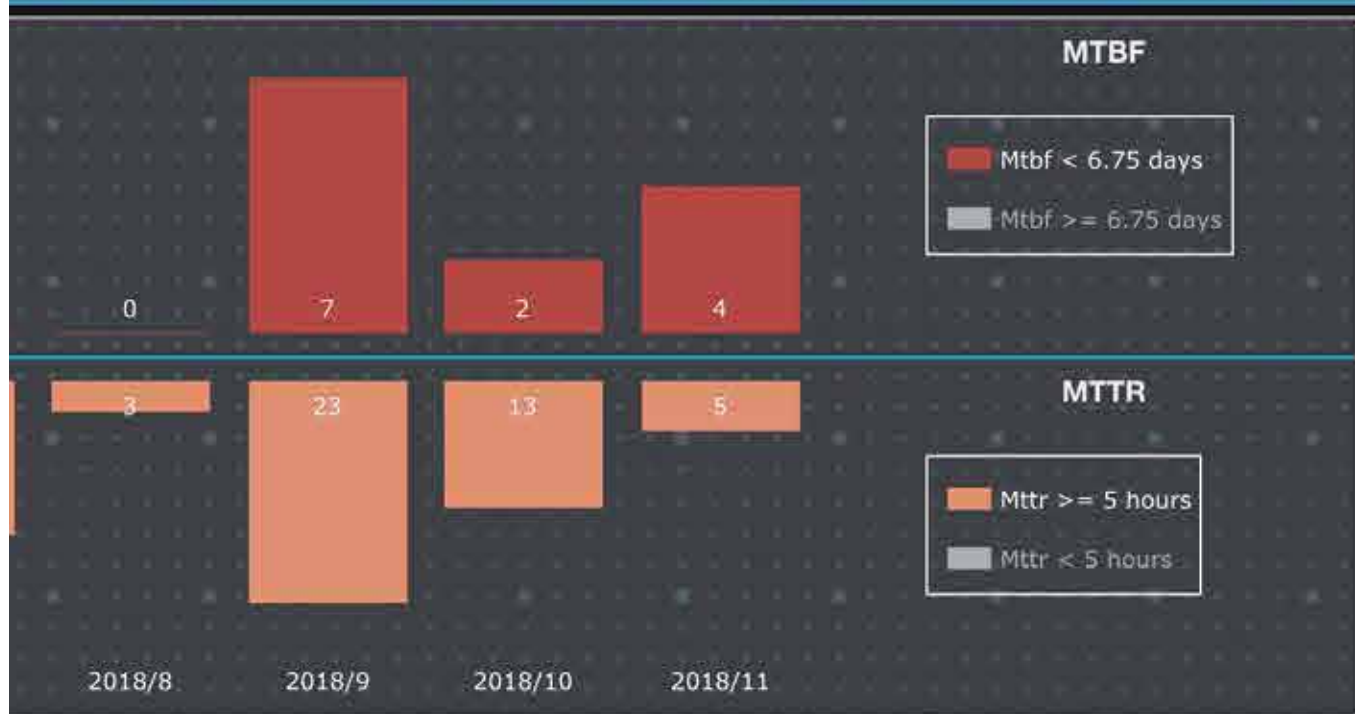
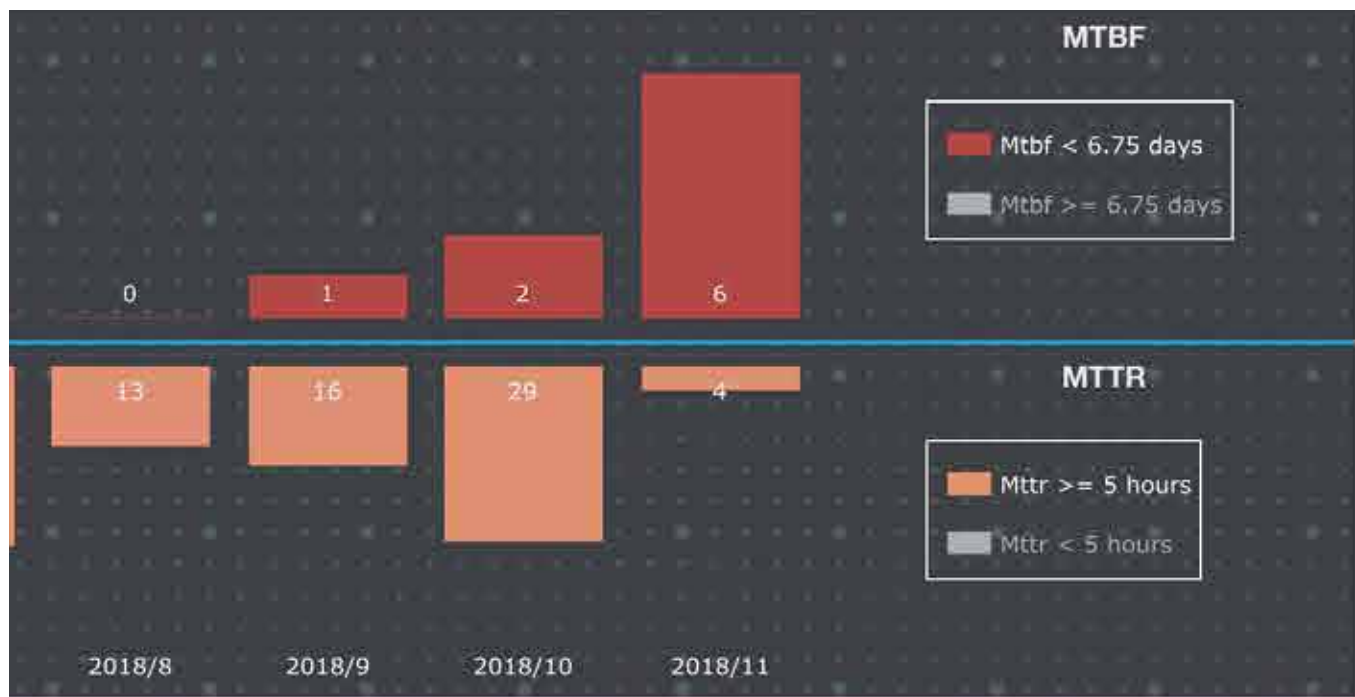
► Bandwidth/Port Utilization Reports

► Microwave AMR Stability Reports

► Capacity Reports

►





INTERNATIONAL SERVICES (WDM)

☒ Customers ☒ Carriers

	Edirne NDC Guney	Edirne NDC Kuzey	Ipsala PoP	Malkoclar PoP	Mednautilus DC	Silopi PoP
CUSTOMERS	1201.00 30.00 1231.00	445.25 40.00 485.25	1150.00 0.00 1150.00	1831.25 0.00 1831.25	1893.50 30.00 1923.50	490.00 0.00 490.00
GBI	0.00 30.00 30.00	10.00 40.00 50.00	0.00	0.00	0.00 30.00 30.00	0.00
GOOGLE_CN	500.00 0.00 500.00	0.00	300.00 0.00 300.00	800.00 0.00 800.00	800.00 0.00 800.00	0.00
TATA	300.00 0.00 300.00	90.00 0.00 90.00	350.00 0.00 350.00	270.00 0.00 270.00	0.00	0.00
KPN International	140.00 0.00 140.00	70.00 0.00 70.00	210.00 0.00 210.00	120.00 0.00 120.00	150.00 0.00 150.00	0.00
IONET	0.00	100.00 0.00 100.00	0.00	100.00 0.00 100.00	0.00	300.00 0.00 300.00
FACEBOOK_CN	0.00	0.00	140.00 0.00 140.00	140.00 0.00 140.00	140.00 0.00 140.00	0.00
TIC	0.00	0.00	0.00	0.00	450.00 0.00 450.00	0.00
GTT	50.00 0.00 50.00	110.00 0.00 110.00	80.00 0.00 80.00	140.00 0.00 140.00	0.00	0.00
Deutsche Telekom AG	110.00 0.00 110.00	30.00 0.00 30.00	10.00 0.00 10.00	40.00 0.00 40.00	40.00 0.00 40.00	0.00
NEWROZTEL	10.00 0.00 10.00	10.00 0.00 10.00	0.00	0.00	60.00 0.00 60.00	190.00 0.00 190.00
LEVEL-3	40.00 0.00 40.00	1.00 0.00 1.00	40.00 0.00 40.00	80.00 0.00 80.00	0.00	0.00
Telecom Italia Sparkle	0.00	0.00	0.00	100.00 0.00 100.00	100.00 0.00 100.00	0.00
AVANTI TELECOM	10.00 0.00 10.00	0.00	0.00	10.00 0.00 10.00	10.00 0.00 10.00	0.00

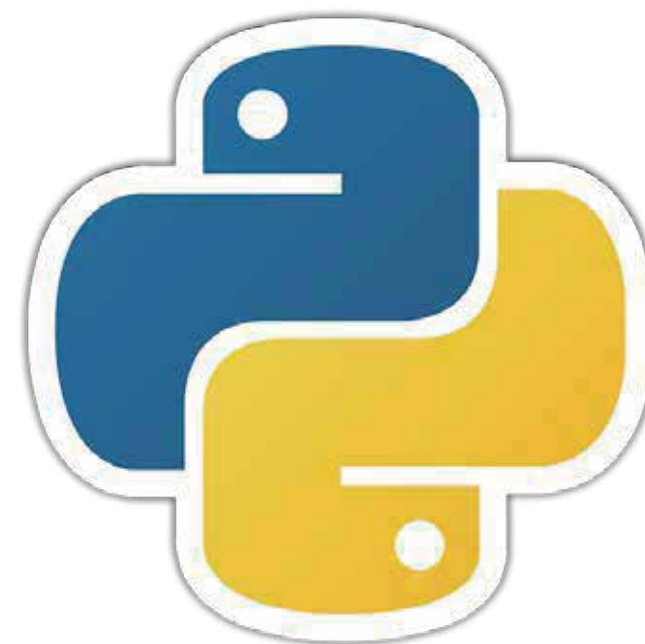
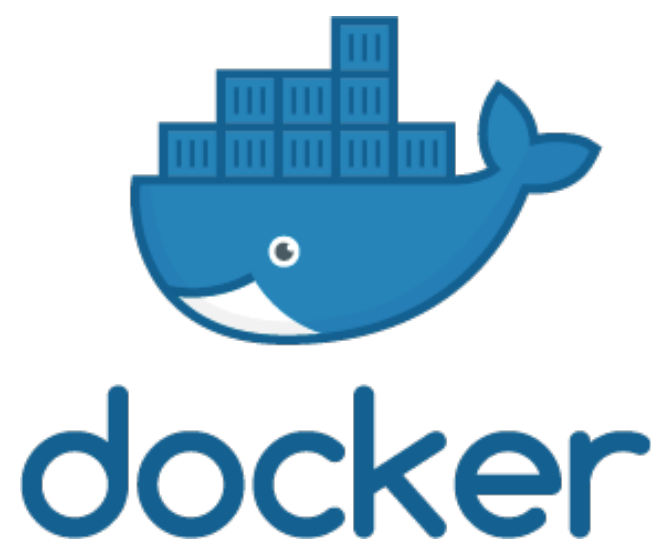
CUSTOMIZATION & SUPPORT

What is offered?

- ▶ The highest level of support (Tier 3 technical support) for any kind of problem
- ▶ Ability to contact with R&D engineers directly
- ▶ Flexibility of integration with other domains/vendors
- ▶ Fully customizable to CSPs' operational process, software needs and expectations



- ▶ Star Suite is based on open source technologies without requiring additional commercial license/costs.
- ▶ The installation is container based, thus it is flexible to install it on different infrastructures.
- ▶ The system architecture allows to establish high availability & disaster recovery solutions.





NART BİLİŞİM HİZMETLERİ

📍 : ODTÜ TEKNOKENT MET YERLEŞKESİ
Mustafa Kemal Mah. Dumlupınar Bulvarı
No:280 E Blok 2/A 06530
Çankaya, Ankara

✉ : info@technarts.com
🌐 : <https://technarts.com>
☎ : +90 (312) 354 98 68